



Theydon Park Road, Epping, CM16

BUTLER & STAG



Enviably positioned in the sought after village of Theydon Bois adjacent to the duck pond and green, is this delightful two bedroom semi-detached house located just a short walk from the tube station and village shops.

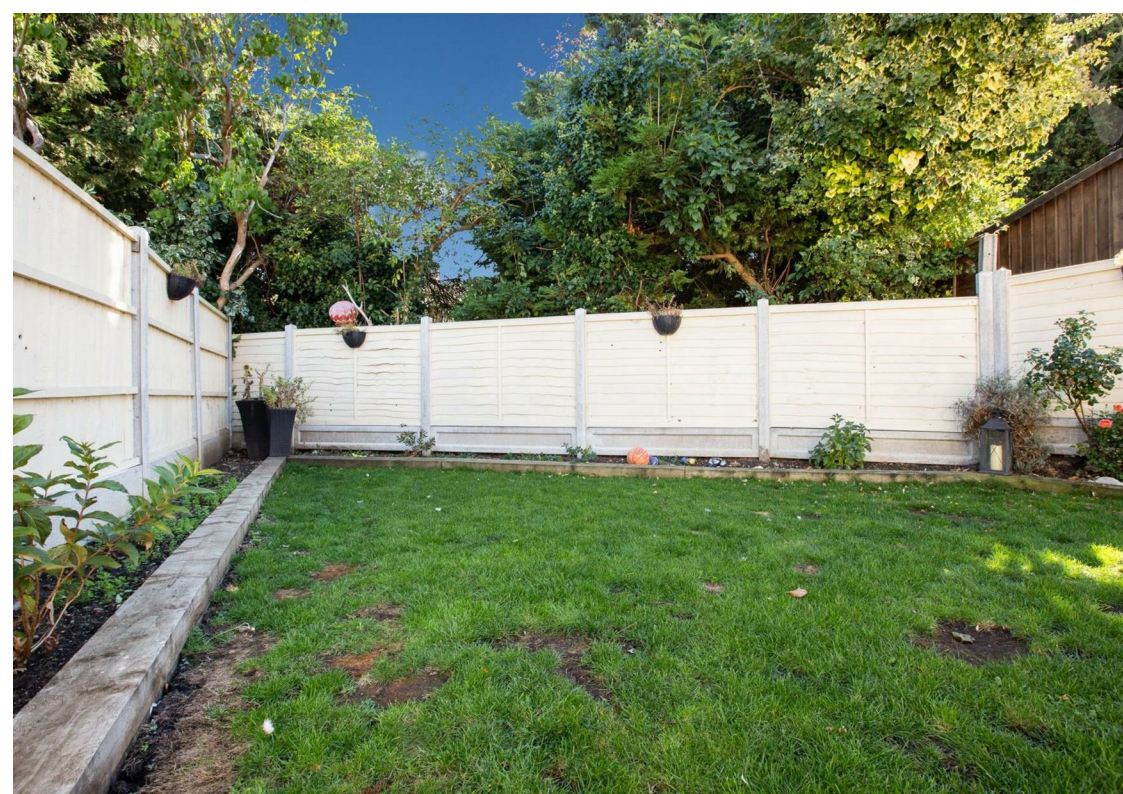
Recently renovated, this spacious house is arranged over two floors. Accommodation comprises a newly fitted kitchen/breakfast room with feature island, guest cloakroom and utility room with under stairs storage cupboard, lounge which is semi- open plan to the kitchen and offers a wonderful dual aspect entertaining space which acts as a focal point of this lovely property.



Freehold

- End Terraced House
- Off Street Parking & Generous Frontage
- Superb Position Next To Village Green
- Beautifully Presented
- Two Bedrooms
- Kitchen/ Diner & Utility Room



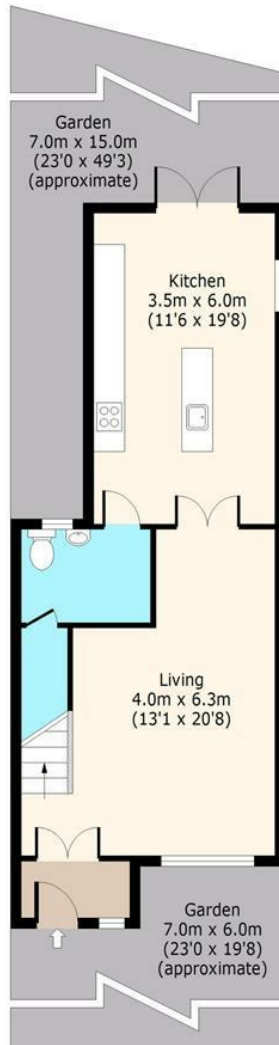


Theydon Park Road, CM16 7LS



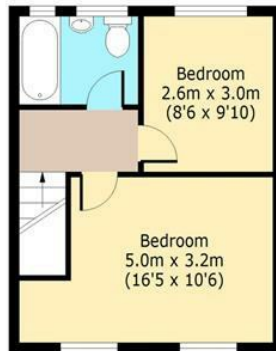
First Floor

Approx. 55 Sq. meters (592 Sq. feet)



Second Floor

Approx. 31 Sq. meters (334 Sq. feet)



Total area: approx. 86 Sq. meters (926 Sq. feet)
For illustration purposes only - not to scale
www.londonpropertyassessments.co.uk

IMPORTANT NOTICE - These particulars have been prepared in good faith and they are not intended to constitute part of an offer or contract. We have not performed a structural survey on this property and the services, appliances and specific fittings have not been tested. All photographs, measurements, floor plans and distances referred to are given as a guide and should not be relied upon.

BUTLER & STAG

☎ 01992 667666

🏠 4 Forest Drive, Theydon Bois, Essex, CM16 7EY

✉ theydon@butlerandstag.com

www.butlerandstag.uk